

## SINGLE-PHASE CAPACITOR-RUN ASYNCHROUS INDUCTION MOTOR WITH ALUMINIUM HOUSING

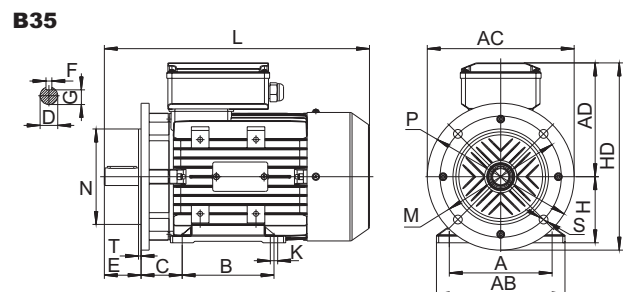
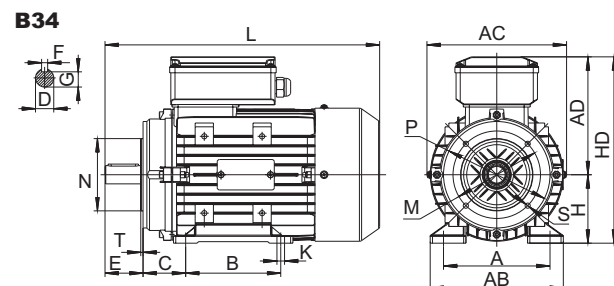
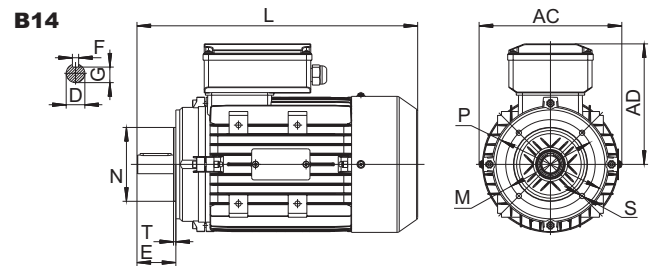
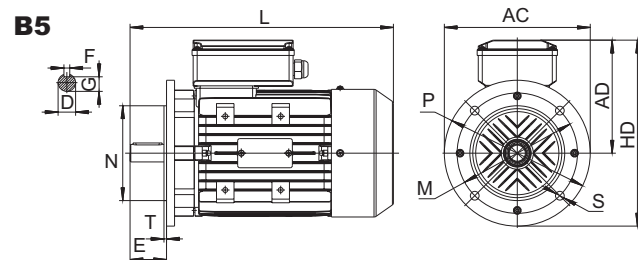
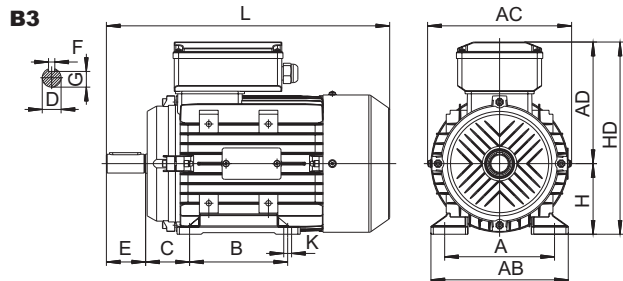
MY series aluminium housing single-phase capacitor-run asynchronous motors, with latest design in entirety, are made of selected quality materials and conform to the IEC standard.

MY motor have good performance, safety and reliable operation, nice appearance, and can be maintained very conveniently, while with low noise, little vibration and at the same time of light weight and simple construction.

These series motors are suitable for the occasion where there requirement of starting torque is low and long-term continuous working, such as home electric appliance, pumps, fans and recording meters, etc.

### Operating Conditions

Ambient temperature:	-15°C <math>\theta</math> <math><40^{\circ}\text{C}</math>
Altitude:	Not exceeding 1000meters
Rated voltage:	220V
Rated frequency:	50Hz /60Hz
Duty/Rating:	Continuous (S1)
Insulation class:	Class B/F
Protection class:	IP54, IP55
Cooling method:	ICO141



## INSTALLATION SIZE AND OVERALL DIMENSION

in mm

Frame No	Installation Size									Installation Size For B14						Installation Size For B5						Overall Dimension				
	A	B	C	D	E	F	G	H	K	M	N	P	R	S	T	M	N	P	R	S	T	AB	AC	AD	HD	L
63	100	80	40	11	23	4	8.5	63	7	75	60	90	0	M5	2.5	115	95	140	0	10	3.0	130	130	115	185	230
71	112	90	45	14	30	5	11	71	7	85	70	105	0	M6	2.5	130	110	160	0	10	3.5	145	145	125	205	255
80	125	100	50	19	40	6	15.5	80	10	100	80	120	0	M6	3.0	165	130	200	0	12	3.5	160	165	135	235	295
90S	140	100	56	24	50	8	20	90	10	115	95	140	0	M8	3.0	165	130	200	0	12	3.5	180	185	145	265	335
90L	140	125	56	24	50	8	20	90	10	115	95	140	0	M8	3.0	165	130	200	0	12	3.5	180	185	145	265	360

## TECHNICAL DATA

TYPE	Power KW	Power HP	Voltage (V)	Current (A)	Speed (r/min)	Eff (%)	Power Factor	Tstart/Tn (Time)	Tmax/Tn (Time)	Tarting A (A)
<b>220V 50Hz Synchronous Speed 3000 r/min (2 Poles)</b>										
MY5612	0.09	0.12	220	0.77	2800	58	0.92	0.40	1.7	--
MY5622	0.12	0.18	220	0.96	2800	62	0.92	0.40	1.7	--
MY631-2	0.18	0.25	220	1.48	2800	60	0.92	0.40	1.7	5
MY632-2	0.25	0.33	220	1.96	2800	63	0.92	0.40	1.7	7
MY711-2	0.37	0.5	220	2.73	2800	67	0.92	0.35	1.7	10
MY712-2	0.55	0.75	220	3.88	2800	70	0.92	0.35	1.7	15
MY801-2	0.75	1	220	5.15	2800	72	0.92	0.33	1.7	20
MY802-2	1.10	1.5	220	7.02	2800	75	0.95	0.33	1.7	30
MY90S-2	1.50	2	220	9.44	2800	76	0.95	0.3	1.7	45
MY90L-2	2.20	3	220	13.67	2800	77	0.95	0.3	1.7	65
<b>220V 50Hz Synchronous Speed 1500 r/min (4 Poles)</b>										
MY5614	0.06	0.08	220	0.57	1400	53	0.90	0.4	1.7	--
My5624	0.09	0.12	220	0.81	1400	56	0.90	0.4	1.7	--
MY631-4	0.12	0.18	220	1.1	1400	55	0.90	0.4	1.7	3.5
MY632-4	0.18	0.25	220	1.62	1400	56	0.90	0.4	1.7	5
MY711-4	0.25	0.33	220	2.02	1400	61	0.92	0.35	1.7	7
MY712-4	0.37	0.5	220	2.95	1400	62	0.92	0.35	1.7	10
MY801-4	0.55	0.75	220	4.25	1400	64	0.92	0.35	1.7	15
MY802-4	0.75	1	220	5.45	1400	68	0.92	0.32	1.7	20
MY90S-4	1.10	1.5	220	7.45	1400	71	0.95	0.32	1.7	30
MY90L-4	1.50	2	220	9.83	1400	73	0.95	0.2	1.7	45